

PRODUCT : rGO-V50-M1

General Characteristics : Chemically Synthesized Graphene

---

**PARAMETER**

**SPECIFICATIONS**

VISUAL:

Fluffy, Light Powder

COLOR:

Match Standard, Black

SPECIFIC SURFACE AREA:

600 m<sup>2</sup>/g – 800 m<sup>2</sup>/g

Electrical Conductivity:

Ave. 30 S/cm (as powder resistance)

CARBON BY WT%:

84% – 88%

OXYGEN BY WT%:

4.0% – 7.0%

SULFUR BY WT%:

< 0~0.3%

ASH BY WT%:

≤ 4%

**PHYSICAL SIZES:**

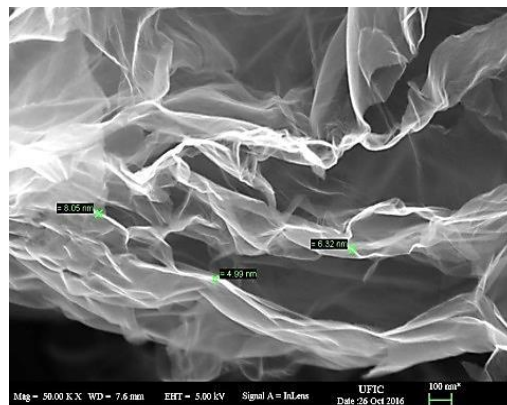
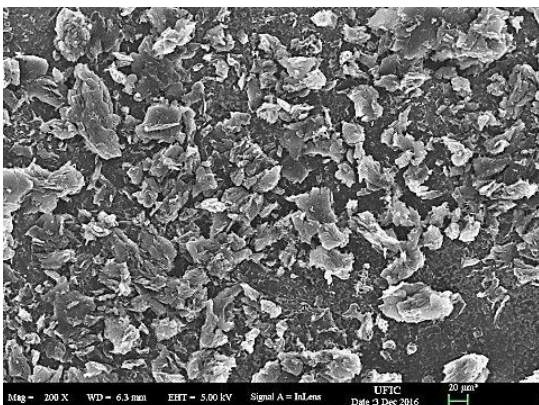
AVERAGE LATERAL DIMENSION (x & y)

≥ 30 um

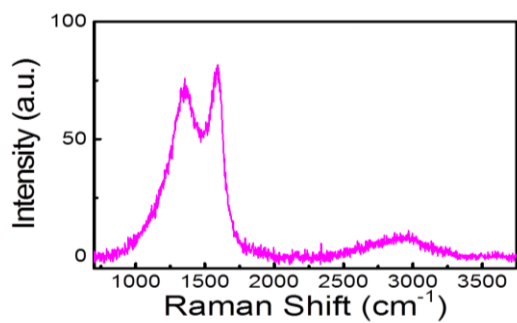
AVERAGE THROUGH-PLANE DIMENSION (z)

~ 1.0 – 1.4 nm (as estimated by BET)

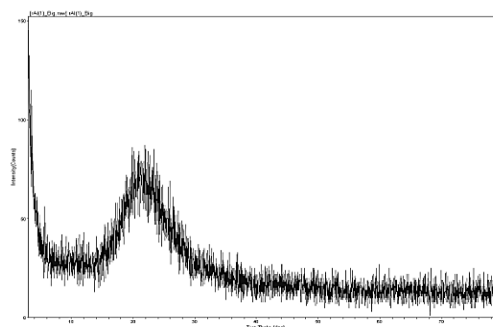
**SEM Images**



## Raman Results

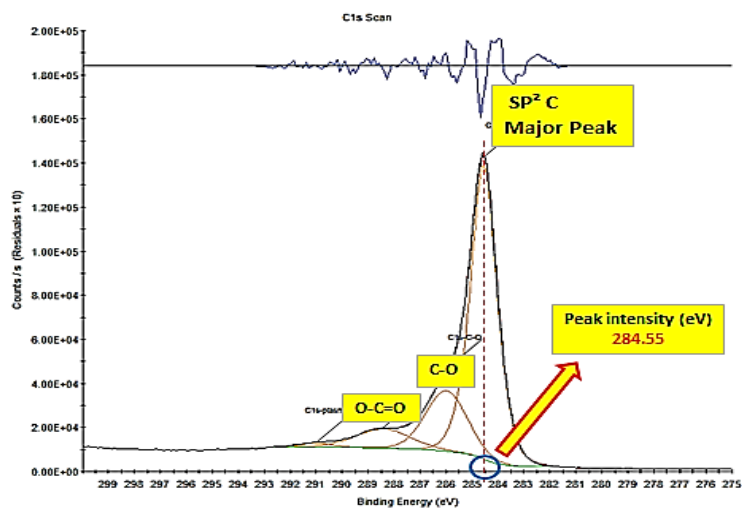


## XRD Data

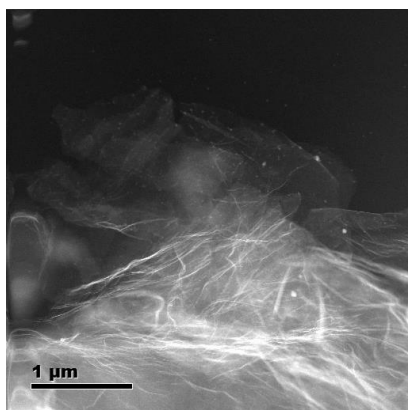
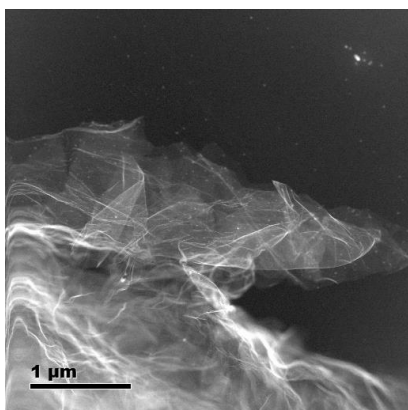


D/G Intensity Ratio: 0.89

## XPS Data



## TEM Images



Performed by an accredited Outside Test Facility

Data Written: 05/01/2015

Revision Date: 23/08/2017