

PRODUCT : rGO-V20

General Characteristics : Chemically Synthesized Graphene

**PARAMETER**

**SPECIFICATIONS**

VISUAL:

Fluffy, Light Powder

COLOR:

Match Standard, Black

SPECIFIC SURFACE AREA:

400 m<sup>2</sup>/g – 450 m<sup>2</sup>/g

Electrical Conductivity:

Ave. 15 S/cm (as powder resistance)

CARBON BY WT%:

82% – 88%

Sulfur BY WT%:

< 0~1.0%

OXYGEN BY WT%:

5.0% – 7.0%

ASH BY WT%:

≤ 3.0%

**PHYSICAL SIZES:**

AVERAGE LATERAL DIMENSION (x & y)

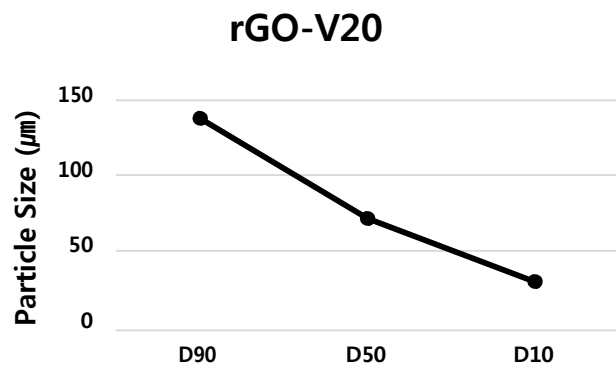
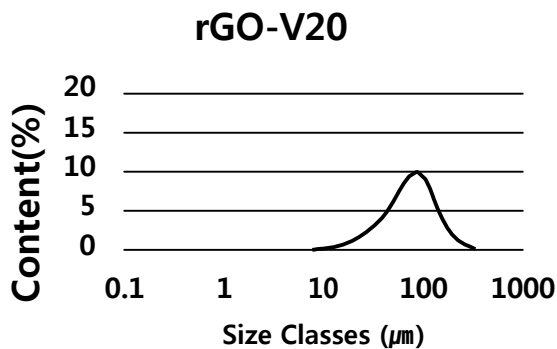
≥ 30 um

AVERAGE THROUGH-PLANE DIMENSION (z)

~ 2.0 – 2.4 nm (as estimated by BET)

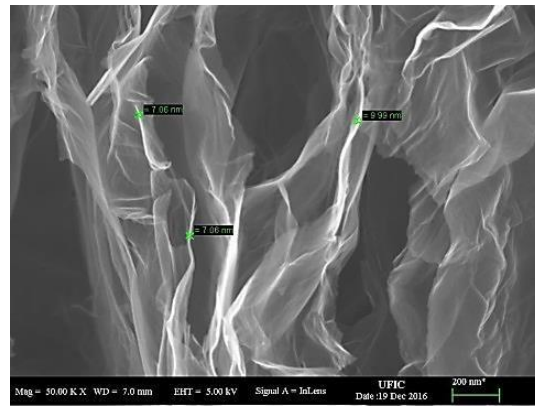
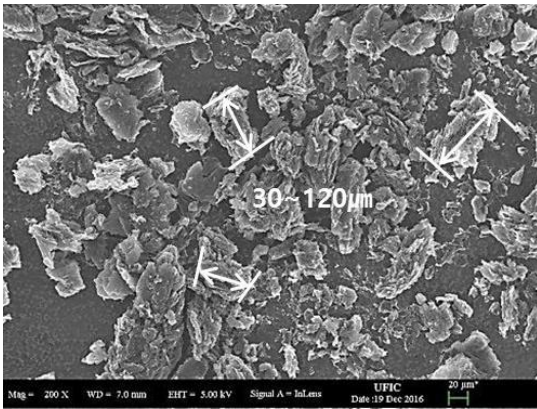
AVERAGE PARTICLE SIZE

D<sub>50</sub>= 71.22 (Measured by PSA)

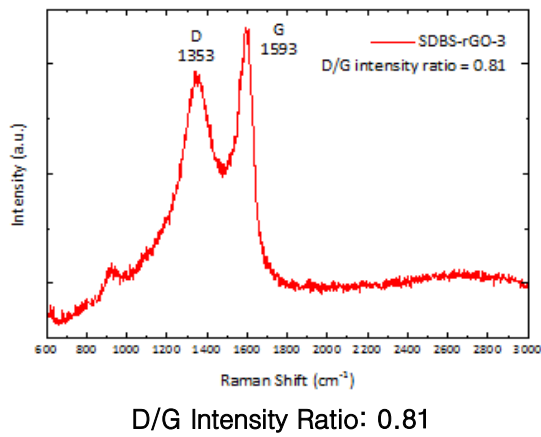


	D <sub>10</sub>	D <sub>50</sub>	D <sub>90</sub>	St. Dev.
rGO-V20	29.61	71.22	137.14	44.98

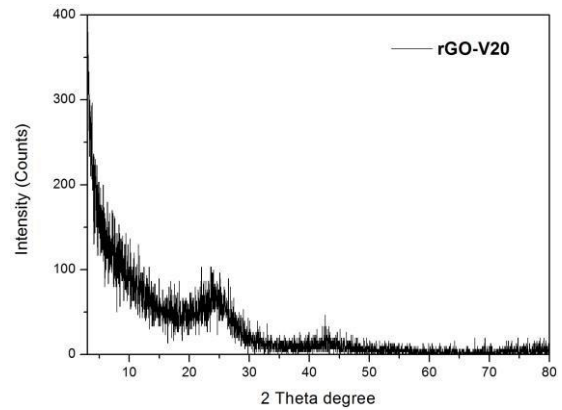
## SEM Images



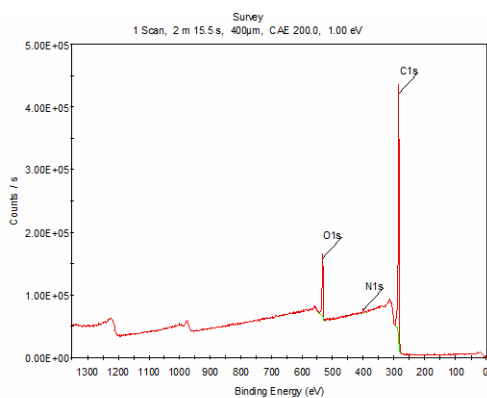
## Raman Results



## XRD Data



## XPS Data



Performed by an accredited Outside Test Facility

Data Written: 06/05/2016

Revision Date: 26/01/2017